



BACCARA

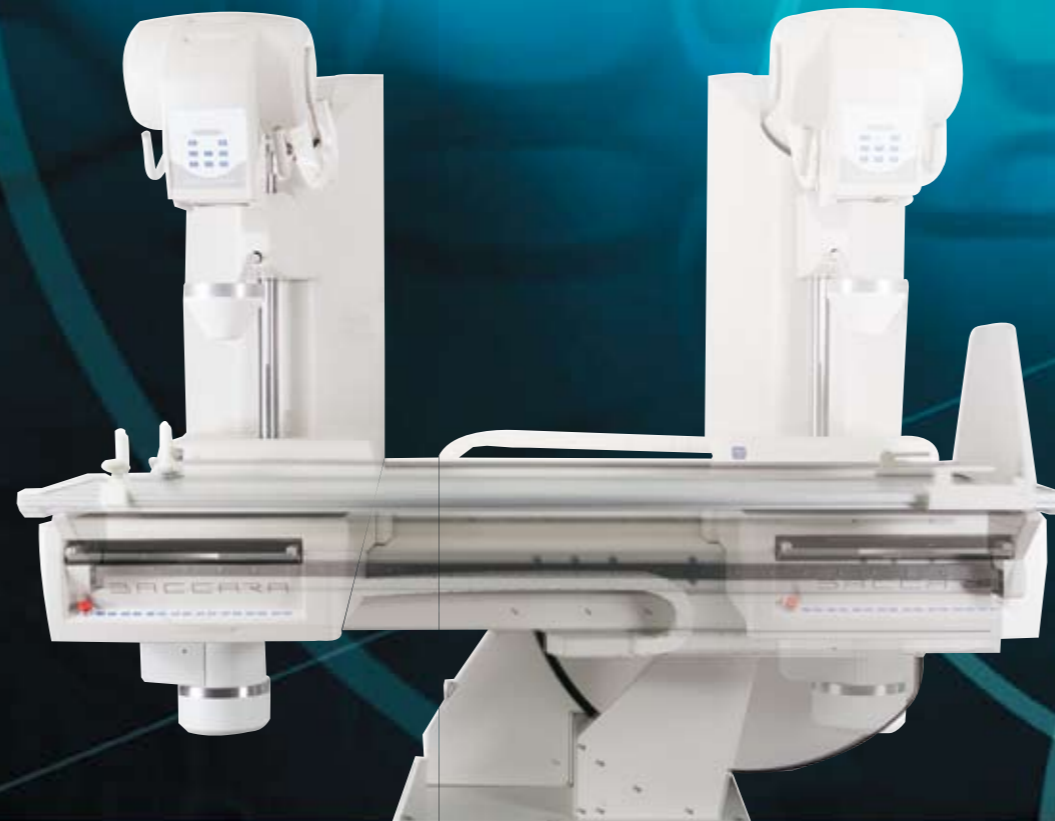
Remote controlled table

IMAGES
FOR
LIFE



DMS GROUP

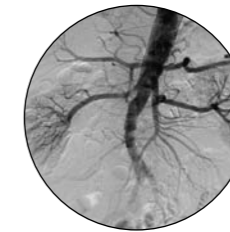
Innovations



Reliability without compromise...

For over 30 years, APELEM has privileged the research and development of innovative x-ray systems in order to provide our customers with the very latest in technology. The BACCARA complies with the requirements of all international security standards and regulations*. Versatile and up-gradable to digital, the BACCARA remote controlled table can easily be equipped with the full field dynamic digital detector dRF 43 (17"x17") in order to offer an «all in 1» solution for radiography, tomography, fluoroscopy and DSA, all with the same detector!

* European Directive 93/42/CEE and ISO normes 9001 and ISO 13485



Innovation 1

Conventional equipment becomes upgradeable to digital!

Totally versatile and efficient in its conventional configuration, the BACCARA has an automatic spot film device for cassettes up to 36x43 cm (with subdivisions on 2/3/4 and 5 on large formats) allowing a precise and sure diagnosis. The following examinations are possible: gastrointestinal, urological, pulmonary, hystero-graphy, myelography, lymphography, radiography of the skeleton, tomography and pediatrics (removable grid).

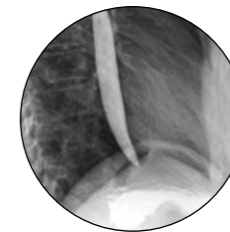


Innovation 2

Enter the digital era, with FLASH!

- FLASH 1500: digital R/F
- FLASH 2000: digital R/F/DSA

The FLASH digital system enables real time image acquisition (fluoroscopy, radiography and DSA) without cassette handling. In addition to routine examinations, the BACCARA enables angiography, peripheral angiography, including stepping, phlebography, vascular and non vascular procedures. The ALLIANCE software platform powering the Flash, provides you with all the information necessary for diagnosis. The BACCARA can also feature a selector and a digital imaging system, at the same time.



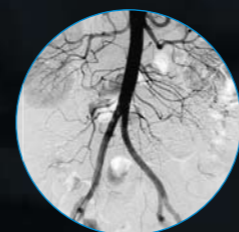
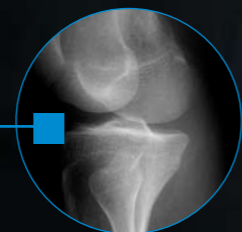
Innovation 3

Benefit from the most advanced technology in digital imaging with the dRF43 full field detector

Resolutely looking towards the future, the BACCARA has been specially designed to be equipped with the dRF 43, the new full size dynamic digital detector Trixell Pixium RF4343 (2880 x 2880 pixels - 43 x 43 cm) for static and dynamic acquisition: up to 30 img/sec for full field fluoroscopy exams and 18 img/sec for DR exams. The dRF 43 is a multi-resolution (up to 3.4 pl/mm - 148µ) detector. This device replaces the classical cassette/film and image intensifier components.

BACCARA

The standard in remote controlled tables



Enter into the filmless era.



I M A G E S F O R L I F E X



Discover performance and evolution with APELEM's new remote controlled table

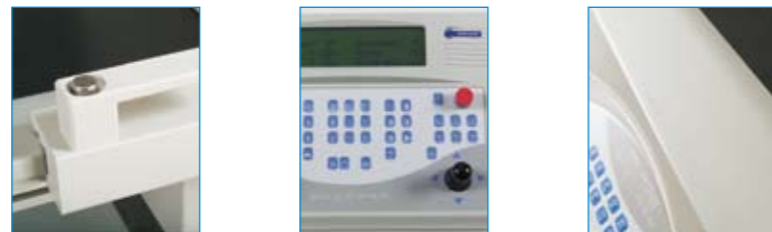
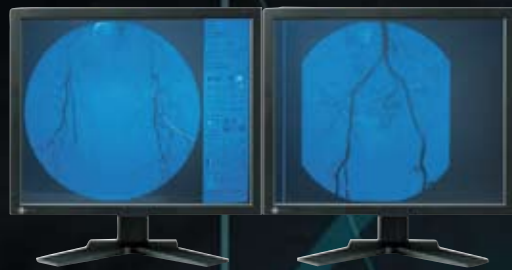
BACCARA





BACCARA

Flat TV monitors
Flicker free display



When research and industry work hand in hand

P e r f o r m a n c e

- An increased movement of the x-ray tube (170 cm) enables a complete head-to-foot examination. Patient coverage of 203 cm (250 cm as an option).

- The low height of the table-top provides the patient with easier access.

- By reducing the distance between the table-top and the film, the image quality is significantly improved.

- The Focus to Film distance (SID) – which can be continuously adjusted (105 and 150 cm) – gives maximum sharpness to the image.

- The incidence of the column is +/- 40° with parallax correction and the adjustable compression device is fully motorized.

- The +/- 180° rotation of the tube enables exposure against a wall-bucky or on a stretcher, thus completing the range of applications of the system.

- In its VH model*, the BACCARA is fitted with a variable height table-top, from 75 to 110 cm. Access is thus made easier for the patient and provides more comfort for the operator.

- The removable grid features significantly reduce the patient dose.

- As well as the lateral table-top movement (+/-15 cm), the BACCARA can be equipped with a motorized longitudinal table-top movement (+/- 75 cm)* which facilitates the positioning of the patient.

- The image Intensifier lift* enables the I.I. to be closer to the patient, thus the image quality is at its best.

**optional*

BACCARA VH

Enter into the filmless age with the dRF 43 system...

TECHNICAL DATA

Tilting	BACCARA	BACCARA VH
	+90°/-20°	+90°/-25°
Tilting speed with progressive starting	6°/sec	
Rotation of x-ray tube	+/-180°	
Automatic Spot Film Device for cassettes	Up to 36 x 43 cm, in both directions	
Divisions	2/3/4/5	
High definition oscillating grid	40l/cm R:12 F:120 cm	
Longitudinal movement of x-ray tube	170 cm	
Variable focus-film distance (SID)	105 - 150 cm	
Oblique projections	+/- 40° with parallax corrections	
Compression type	Motorised with compression cone	
Switching time between Fluoro and Radiography	< 1 sec	
Automatic collimator with light beam diaphragm		
Tomography		
Tomography in any position of the table	8°/20°/40°, with 2 speeds/angle	
Table-Top		
Table-top material	Laminate	
Dimensions	246 x 74 cm	
Table Height	89 cm (75*-110 cm elevating)	
Lateral movement of table-top	+/-15 cm	
Max patient weight	160 kg (200 kg with limitation)	
Electrical features		
Power supply	400 VAC +/-10% (3ph + N + G)	
Installation data		
Table dimensions	246(L) x 179(W) x 194(H) cm	
Weight of the table	990 kg	
Minimum room size (BACCARA Standard)	385(L) x 350(P) x 256(H) cm	
Options		
Carbon fibre table-top		
Stepping mode for angiography		
Longitudinal movement of table-top (+/-75 cm)		
Image Intensifier lift		
Digital Imaging system FLASH		
Digital dynamic detector Trixell Pixium RF4343		
Room layout		
Minimum room height: 255 cm		
Standard accessories		
Foot-step, hand grips, carbon footrest, compression bands		
Optional accessories		
Shoulder rest, gynecological leg support, immobilisation devices, lateral cassette holder, other accessories on request		

* 75 to 82 cm, according to the size of the image intensifier



IMAGES
FOR
LIFE



D M S G R O U P

Siège social : Parc de la Méditerranée - District de Montpellier - 34470 Pérols - FRANCE
Tél. +33 (0)4 67 50 49 00 - Fax. +33 (0)4 67 50 49 09 - e-mail: export@apelem.com - web: www.apelem.com